

# Update the TCS mkII Firmware

Your TCS mkII has been pre-programmed with the latest firmware when shipped from our factory and does not need to be updated with the program CD that came with your unit. TacT Audio may occasionally release updated versions of the RCS software that will be available on our website "www.tactaudio.com". This new software may contain updates or enhancements for your TCS mkII. When instructed by a technician or messaged from our website please follow the instruction below to update your TCS mkII firmware.

## Step I: Removing your old TCS mkII Software



First un-install the current version of the TacT-TCS mkII software on your computer.

- 1 - Turn on your computer.
- 2 - Open the Windows control panel and select the "Add/Remove Programs" option.
- 3 - Highlight the "TacT TCS MKII" option and click on "Change/Remove".
- 4 - Select "Yes" and the old TCS mkII software will be removed.

**NOTE:** Your target curves and measurements stored under unique names will NOT be removed.

## Step II: Install your new TCS mkII Software

You now need to install the new TacT TCS MKII software on your computer.

- Double-click on the "Install TCS MKII V.exe" file that you have downloaded or is found on the root of your CD and follow the installation instructions.

## Step III: Reprogramming the TCS mkII Firmware



Program the new firmware for the TCS mkII.

- 1 - Connect the PC to the TCS mkII using the RS232 cable.

**CAUTION:** There can only one TCS mkII connected to the RS232 cable during system reprogramming. Please disconnect any additional TCS mkII units that may be daisy chained to the TCS mkII that is being programmed.

- 2 - Turn the TCS mkII ON from the rear panel mains and front panel switch.

- 3 - Start the TacT MKII software on your computer.

- 4 - Use the "Com" option in the Tact MKII room correction software to make sure that the TCS mkII and your computer are communicating. Please refer to the TCS RS232 Connection document for help.

- 5 - Turn the TCS mkII OFF from the front panel power switch.

## Update the Tact TCS MKII Firmware

**6** - From the TCS MKII main software screen on your computer go to the “**Add-Ins**” menu located at the top of the screen and click on “**Standard**” menu option.

**7** - From the Standard screen click on the “**Place TCS MKII in Programming Mode**” button. You will then have 20 seconds from the time you clicked on the button to perform step 8. Repeat this step again if the Standard screen times out.



**8** - Turn the TCS ON from the front panel power switch. When TCS MKII powers up it will display the following screen:

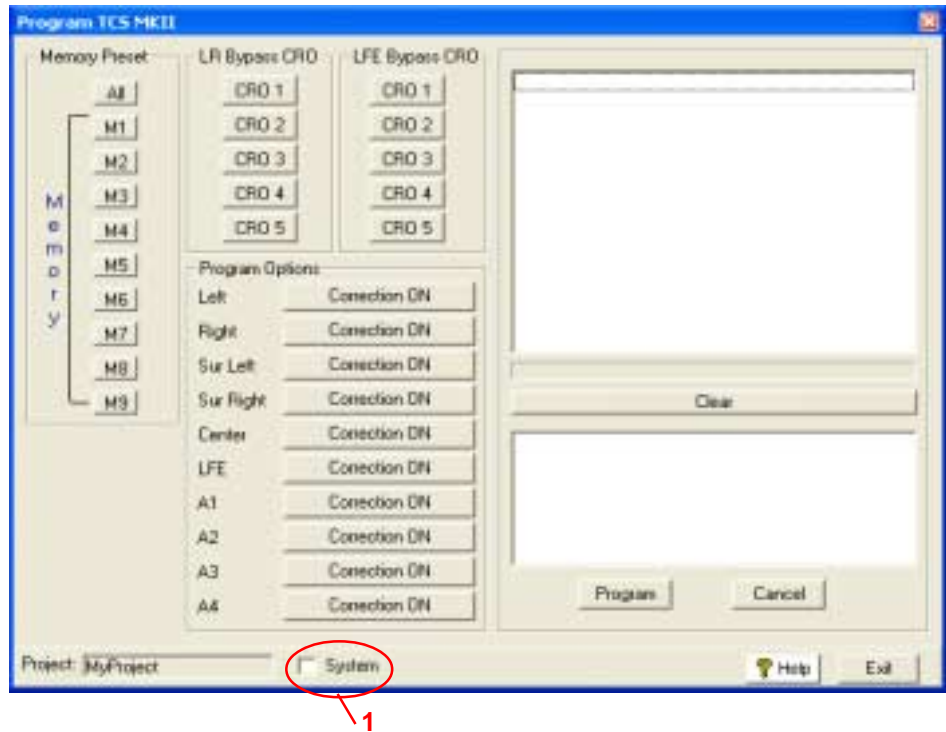
Front panel display :

TCS MKII  
PROGRAMMING MODE

**9** - From the Standard window click on the “**Program**” button to initiate firmware programming. The programming status will be displayed in the Standard window on the computer and on the TCS mkII front panel display. After the programming is completed the TCS mkII will turn OFF and ON and resume to normal operation.

**Step IV:  
Reprogram the  
System Files**

After updating the firmware the System Files now need to be reprogrammed.



**1** - From the TacT TCS MKII software main screen, click on the “Pr” button. You should now see the programming window.

**2** - Press and hold the “Control” key on your computer keyboard and then press the “S” key simultaneously. This should display the **System Option (1)** in the bottom center of the programming window.

**3** - Left click your mouse in the square next to System to select it with a check mark.

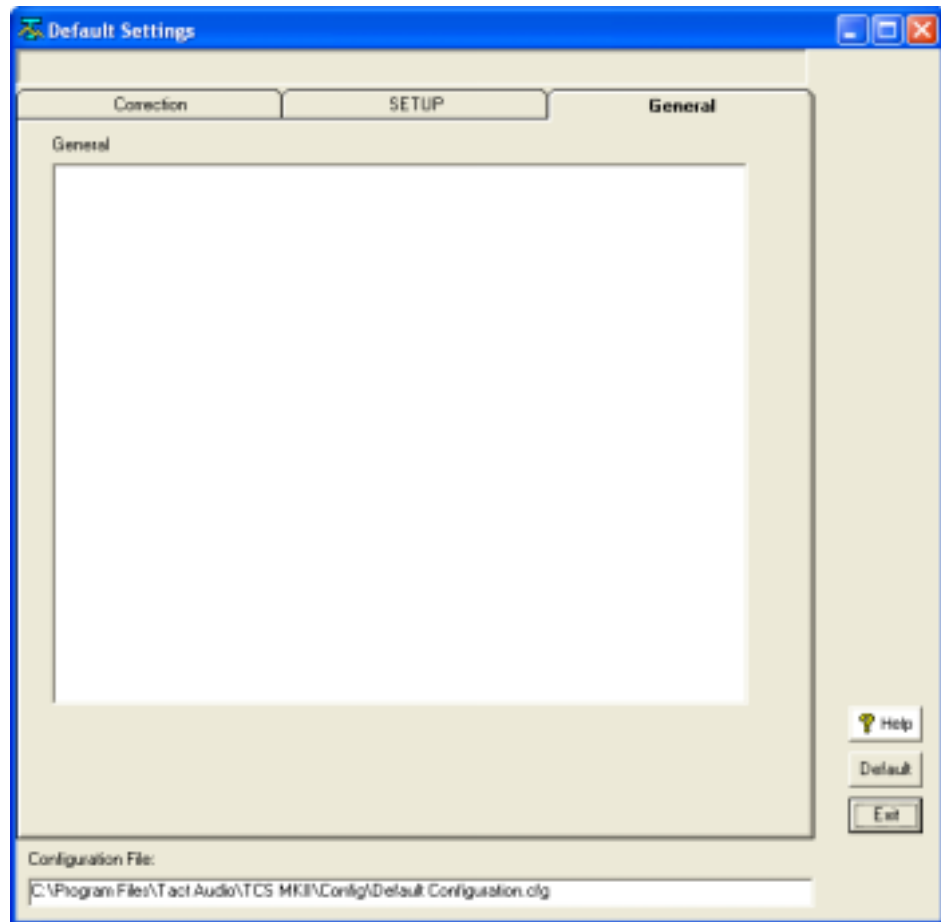
**4** - Press the “Program” button and follow the prompts by answering the questions. You will need to be able to answer “Yes” to all questions to start the system file reprogramming. The Program window will display a “programming complete” message when the system programming is completed.

**Step V:  
Restoring the Default  
TCS mkII Settings**

***This step is optional and is only required if you would like to reset all internal settings in the unit to their factory defaults. If you proceed you will erase your custom user settings.***

Restore the default settings for the new firmware installed on the TCS mkII.

**1** - From the TCS mkII software main screen, click on “**Options**” menu option at the top of the screen and then select the “Default Settings” option. You should now see the Default Settings window.



**2** - Select the “**Default**” button and the default parameters for the TCS mkII will be loaded into the TCS mkII. The TCS mkII will turn OFF and then ON and return to normal operation mode when finished.

**TCS mkII  
update complete**

You have now completed updating your TCS mkII and it is ready for normal operation.