

Quick Setup

The Tact 2.2X Quick Setup wizard is designed to help both the first time and experienced user perform complete room correction and create nine correction presets quickly and easily. To run the Quick Setup successfully you will need to know your speaker configuration, your loudspeakers lower cut-off frequency, and the type of amplifier(s) that you have connected. This information will allow the Quick Setup to automate the room correction process for you so that you can begin enjoying the benefits of room correction immediately. For a detailed explanation of all of the software features and instruction for performing room correction manually please see the online help available in the software.

Before You Begin



- 1 - Connect the RS 232 “**Input**” jack on the back of the RCS-2.2 X to your computers serial port using the supplied cables and adapters.

NOTE: These instructions assume that you have already established communication between the RCS 2.2X and the Room Correction Software on your computer. See page 32.

- 2 - If you have one or more TacT M2150/S2150 digital amplifiers connect them to the RCS 2.2X. Please make sure that a unique address has been set for each device. For further instructions please refer to your M2150/S2150 owner’s manual.
- 3 - Make sure that the **RCS-2.2 X is powered off** from the rear panel mains switch and connect the supplied measurement microphone to the “**Mic Input**” connector on the back of the RCS-2.2 X. Place the mic at the primary listening position at the height of your head. This will require a microphone stand, or something similar.



CAUTION: To avoid damage through static discharge, we strongly recommend to turn off the RCS-2.2 X at the rear panel mains switch before connecting the microphone.

- 4 - Turn your RCS-2.2 X on.
- 5 - Set the **Mode** setting for the RCS-2.2 X from the units front panel. This is the speaker configuration your system will be using. Please refer to page 18 for more information and instructions.
- 6 - Turn on your computer and start the TacT-2.2 X Correction System Software. If you have not installed the software please see page 31 for instructions.
- 7 - Enable your microphone if you are using the Tact microphone that came with your unit. To enable or disable the microphone click on the “mic:” display window found on the main screen with your left mouse button to toggle its setting. When the microphone number is displayed it is enabled. If you have not installed your microphone please see page 31 for instructions.

Getting Started

Start the Quick Setup by selecting the yellow “**Quick Setup**” button located on the Tact-2.2 X Room Correction System main window.

The Tact-2.2 X Quick Setup wizard is broken into three steps. As you complete each step select the “**NEXT**” button move to the next step.

STEP I

Select the speaker configuration setting that you have set for the RCS 2.2x Operating Mode. This setting is found in the "MODE" menu on the front panel of the RCS-2.2 X.



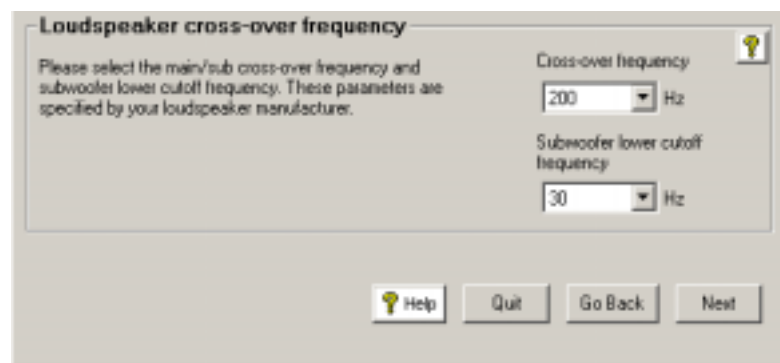
Select:

2.2 operating mode - If your system uses two main loudspeakers and two subwoofers.

2.1 operating mode - If your system uses two main loudspeakers and one subwoofer.

2.0 operating mode - If your system uses only two main loudspeakers.

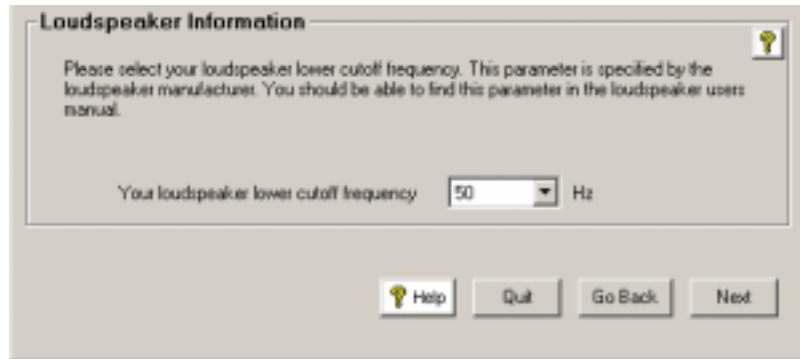
You will then need to set the Loudspeaker Crossover Frequency or Loudspeaker Lower Cutoff frequency. Your Operating Mode selection will determine what parameters will need to be set. Your subwoofer and main loudspeaker frequency response will determine the settings needed for these parameters. Please refer to your main loudspeaker and /or subwoofer manual for this information.



- If you have selected **2.2** or the **2.1 operating mode** you will need to set the:

Loudspeaker crossover frequency (this sets the lowest frequency that will be sent to your loudspeakers.)

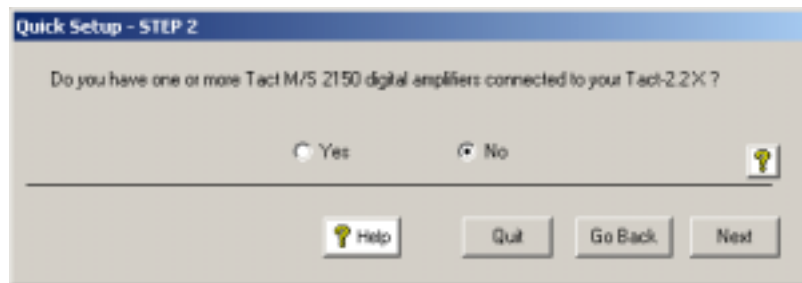
Subwoofer lower cutoff frequency (this is the lowest frequency that your subwoofer can reproduce)



- If you have selected **2.0 operating mode** you will need to set the:
- **Loudspeaker lower cutoff frequency** (this is the lowest frequency that your loudspeakers can reproduce)

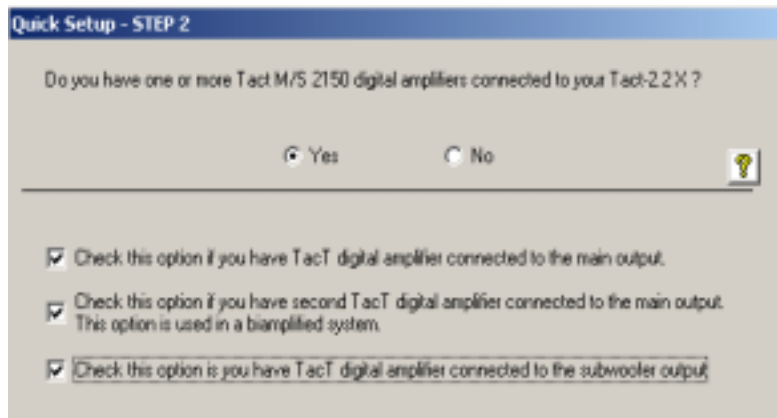
STEP II

Do you have one or more M/S 2150 digital amplifier connected to your TacT-2.2 X?

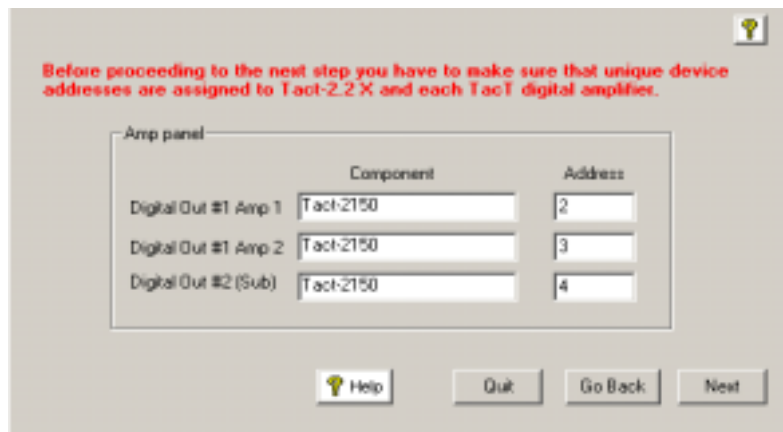


- If you do not use Tact digital amplifiers select **“No”**. Then select the **“Next”** button and go to **Step III**.

STEP II



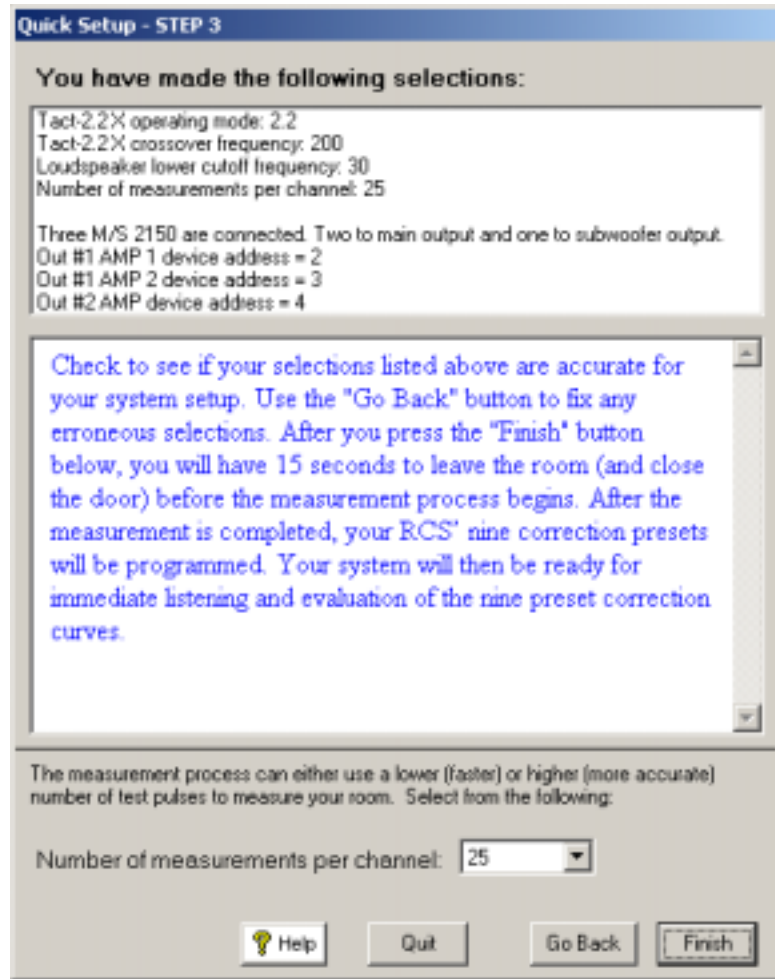
- If one or more M/S 2150 digital amplifiers are connected to your RCS-2.2 X select “**Yes**”. You will now need to select the options that match your RCS-2.2 X connections to your M/S 2150 amplifier(s). If you have more than one digital amplifier you will need to select more than one option.



- Next you will have to enter the unique address number that is assigned to each amplifier in the “**Amp panel**” section. This parameter is automated to enter address numbers 2,3, and 4 consecutively with the selection of your connected amplifiers. The address entered for each amplifier should match the address assigned in the “ADDR” menu of each amplifier. If you need to enter a new address number select the address window that you want to change with your left mouse button and enter the number that you have set for your amplifier.

STEP III

Verify that the selections you made are correct and start the Quick Setup automation.



- If the settings listed are not correct select the “**Back**” button to go back and make the appropriate changes and return to the finish screen when you are ready to start the Quick Setup.
- If the settings listed are correct select the “**Finish**” button. This will start the Quick Setup measurement and programming automation. When the automated process is completed the “**Quick Setup Completed**” message will be displayed. You can now close the RCS 2.2 X software and audition your nine correction presets.



NOTE: The Quick Setup will give you a 15 second delay before the Quick Setup automation starts. This gives you time to leave the listening area before the measurement process begins.