

# Update the RCS-2.2 X Firmware

Your RCS-2.2 X has been pre-programmed with the latest firmware when shipped from our factory and does not need to be updated with the program CD that came with your unit. TacT Audio may occasionally release updated versions of the RCS software that will be available on our website "www.tactaudio.com". This new software may contain updates or enhancements for your RCS-2.2 X. When instructed by a technician or messaged from our website please follow the instruction below to update your RCS-2.2 X firmware.

## Step I: Removing your old RCS2.2X Software



First un-install the current version of the TacT-2.2X RCS software on your computer.

- 1 - Turn on your computer.
- 2 - Open the Windows control panel and select the "Add/Remove Programs" option.
- 3 - Highlight the "TacT-2.2X" option and click on "Change/Remove".
- 4 - Select "Yes" and the old 2.2X software will be removed.

**NOTE: Your target curves and measurements stored under unique names will NOT be removed.**

## Step II: Install your new RCS2.2X Software

You now need to install the new TacT-2.2X RCS software on your computer.

- Double-click on the "Tact 2.2X vx.x.exe" file that you have downloaded or is found on the root of your CD and follow the installation instructions.

## Step III: Reprogramming the RCS2.2X Firmware



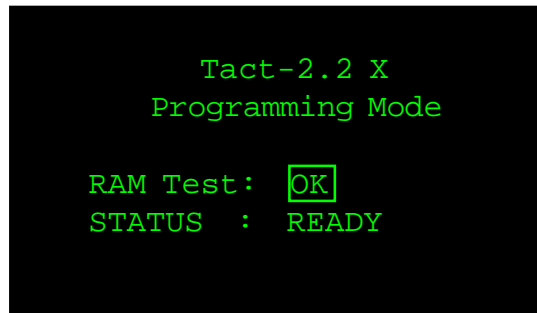
Program the new firmware for the RCS-2.2 X.

- 1 - Connect the PC to the RCS2.2X using the RS232 cable. Please refer to the RCS 2.2X RS232 section of the user's manual or the RS232 Connection document for help.

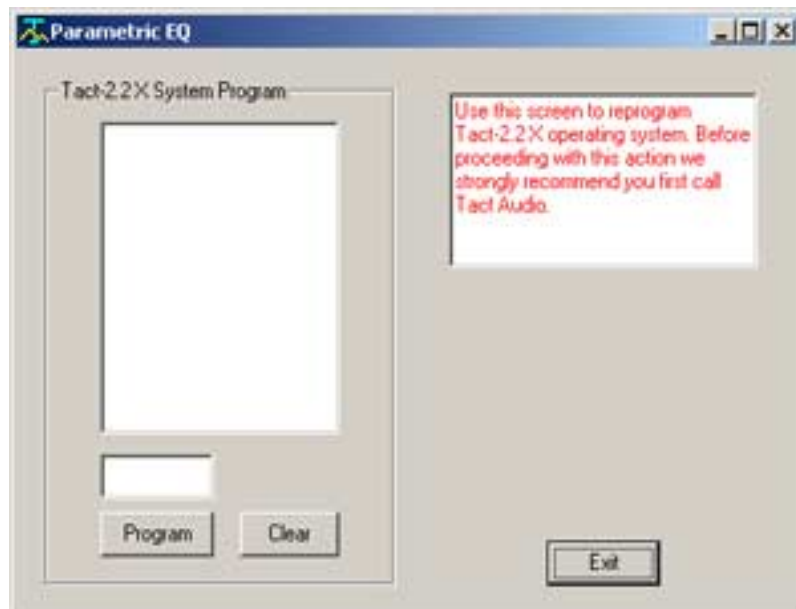
**CAUTION: The RCS-2.2 X should be the only device connected to the RS232 cable during system reprogramming. Please disconnect any TacT digital amplifiers that may be daisy chained to the RCS-2.2 X.**

- 2 - Start the TacT-2.2X RCS software on your computer
- 3 - Use the "Communication" option in the TacT-2.0 S room correction software to make sure that the RCS-2.2 X and your computer are communicating. Please refer to the RCS 2.2X RS232 section of the user's manual or the RS232 Connection document for help.
- 4 - Turn the RCS-2.2 X OFF from the rear panel mains switch.

5 - Press and hold the “**DIGITAL**” and “**ANALOG**” buttons on the front panel of the RCS-2.2 X simultaneously while you turn the unit back ON from the rear-panel mains switch. Hold the buttons until the display shows the “**PROGRAMMING MODE**” screen.



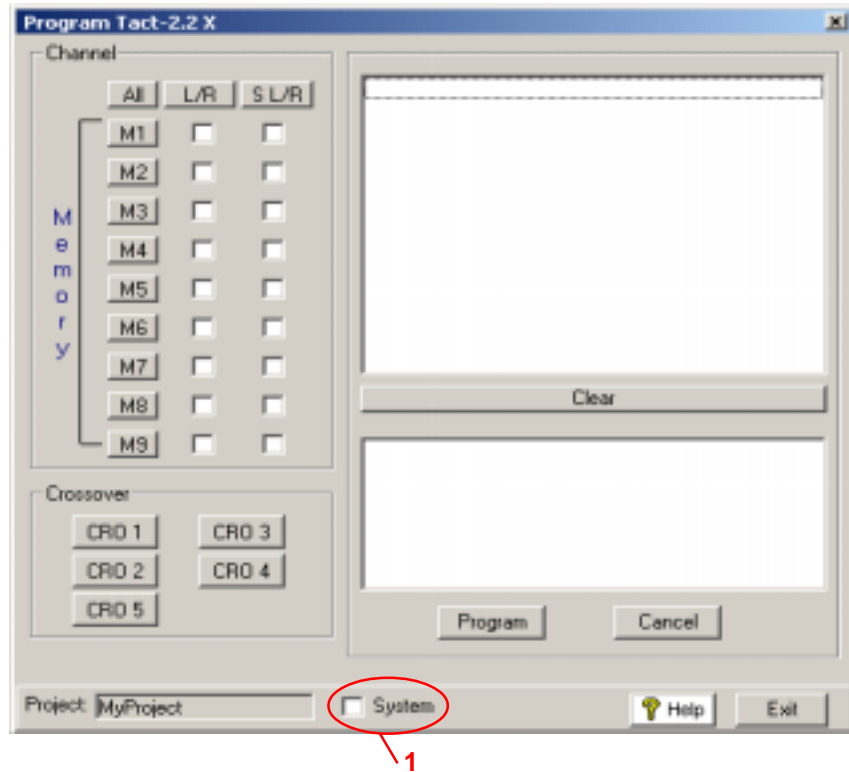
6 - From the Tact-2.2 X RCS software main screen, click on the “**Add-Ins**” and then select the “**Standard**” option. You should now see the Add-Ins window.



7 - Select the “**Program**” button and follow the prompts by answering all questions. You will need to be able to answer “**Yes**” to all questions to start the programming. The RCS-2.2 X will turn OFF and ON and then return to normal operation.

**Step IV:  
Reprogram the  
System Files**

After updating the firmware the System Files now need to be reprogrammed.



**1** - From the TacT-2.2 X RCS software main screen, click on the “**Program TacT-2.2 X**” button. You should now see the programming window.

**2** - Press and hold the “**Control**” key on your computer keyboard and then press the “**S**” key simultaneously. This should display the **System Option (1)** in the bottom center of the programming window.

**3** - Left click your mouse in the square next to System to select it with a check mark.

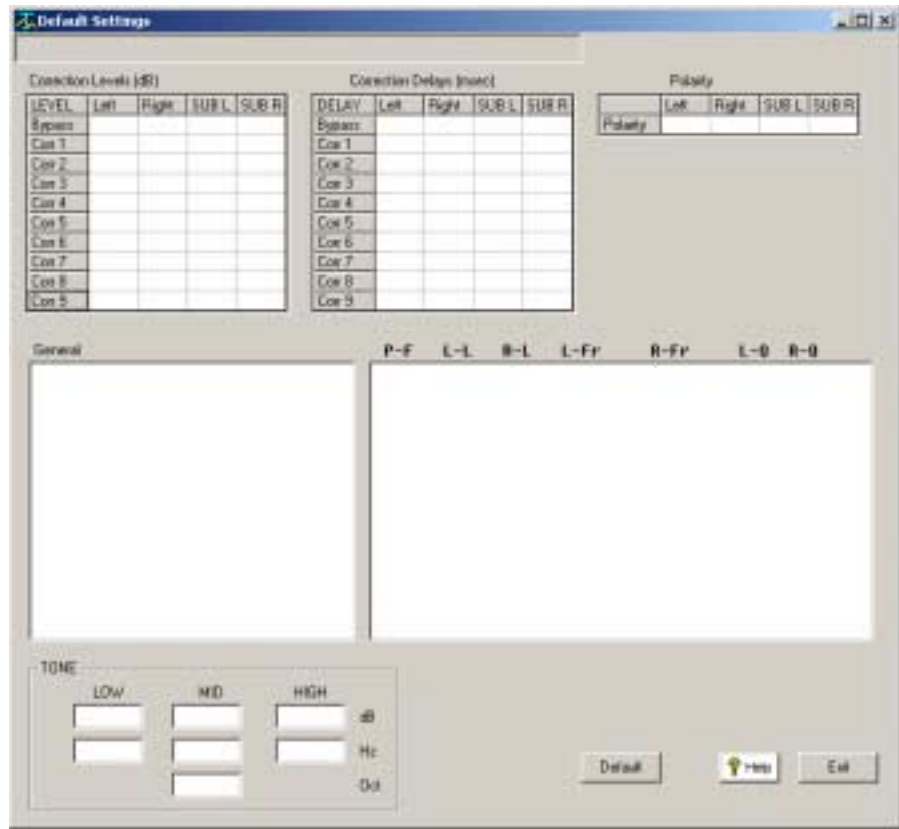
**4** - Press the “**Program**” button and follow the prompts by answering all questions. You will need to be able to answer “**Yes**” to all questions to start the system file reprogramming. The RCS-2.2 X will return to normal operation mode when finished.

**Step V:  
Restoring the Default  
RCS2.2X Settings**

***This step is optional and is only required if you would like to reset all internal settings in the unit to their factory defaults. If you proceed you will erase your custom user settings.***

Restore the default settings for the new firmware installed on the RCS-2.2 X.

**1** - From the TacT-2.2 X RCS software main screen, click on the “**Options**” menu selection at the top of the screen and then select the “**Default Settings**” option. You should now see the Default Settings window.



**2** - Select the “**Default**” button and the default parameters for the RCS 2.2 X will be loaded into the RCS 2.2X. The RCS 2.2X will turn OFF and then ON and return to normal operation when finished.



**NOTE:** If you have TacT digital amplifiers attached to the RCS-2.2 X you must set the “AMP” front panel general menu to “DISABLED”. The default settings will not be programmed if these parameters are set to “ENABLED”.

**RCS 2.2X  
update complete**

You have now completed updating your RCS 2.2X and it is ready for normal operation.