

Quick Setup

The Tact 2.0S Quick Setup wizard is designed to help both the first time and experienced user perform complete room correction and create nine correction presets quickly and easily. To perform the Quick Setup successfully you will need to know your speaker configuration, your loudspeakers lower cut-off frequency, and the type of amplifier(s) that you have connected. This information will allow the Quick Setup to automate the room correction process for you so that you can begin enjoying the benefits of room correction immediately. For a detailed explanation of all of the software features and instruction for performing room correction manually please see the online help available in the software.

Before You Begin



- 1 - Connect the RS 232 “Input” jack on the back of the RCS 2.0S to your computers serial port using the supplied cables and adapters.

NOTE: These instructions assume that you have already established communication between the RCS 2.0S and the Room Correction Software on your computer. See page 25.

- 2 - If you have one or more TacT M2150/S2150 digital amplifiers connect them to the RCS 2.0S. Please make sure that a unique address has been set for each device. For further instructions please refer to your M2150/S2150 owner’s manual.



CAUTION: To avoid damage through static discharge, we strongly recommend to turn off the RCS 2.0 S at the rear panel mains switch before connecting the microphone.

- 3 - Make sure that the **RCS 2.0S is powered off** from the rear panel mains switch and connect the supplied measurement microphone to the “**Mic Input**” connector on the back of the RCS 2.0S. Place the mic at the primary listening position at the height of your head. This will require a microphone stand, or something similar.
- 4 - Turn your RCS 2.0S on.
- 5 - Set the **OUT** setting for the RCS 2.0S. This is the speaker configuration your system will be using. Please refer to page 18 for more information and instructions.
- 6 - Turn on your computer and start the TacT 2.0S Correction Software. If you have not installed the software please see page 24 for instructions.
- 7 - Enable your microphone if you are using the Tact microphone that came with your unit. To enable or disable the microphone click on the “mic:” display window found on the main screen with your left mouse button to toggle its setting. When the microphone number is displayed it is enabled. If you have not installed your microphone please see page 24 for instructions.

Quick Setup

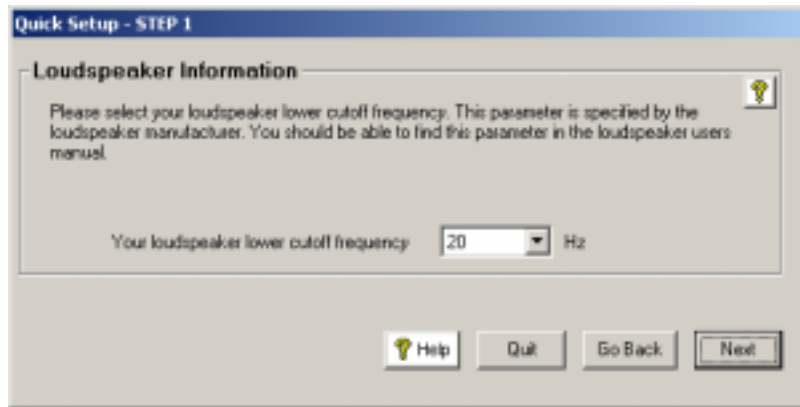
Getting Started

Start the Quick Setup by selecting the yellow “**Quick Setup**” button located on the Tact 2.0 S Room Correction software’s main window.

The Tact 2.0S Quick Setup wizard is broken into three steps. As you complete each step select the “**NEXT**” button proceed to the next step.

STEP I

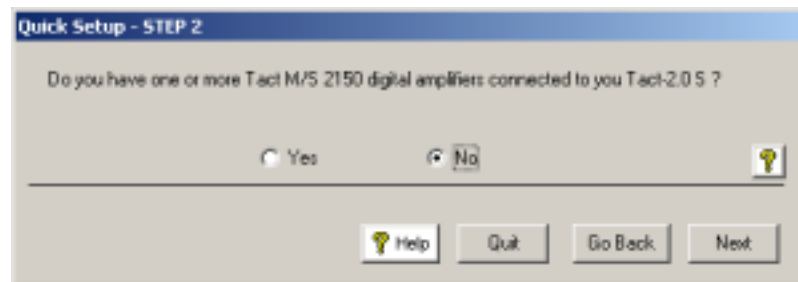
Set the Loudspeaker Lower Cutoff frequency. Your main loudspeaker frequency response will determine the setting needed for this parameter. Please refer to your main loudspeaker manual for this information.



- **Loudspeaker lower cutoff frequency** (this is the lowest frequency that your loudspeakers can reproduce)

STEP II


Do you have one or more M/S 2150 digital amplifier connected to your RCS 2.0S?



- If you do not use Tact digital amplifiers select “**No**”. Then select the “**Next**” button and go to **Step III**.

Quick Setup - STEP 2

Do you have one or more Tact M/S 2150 digital amplifiers connected to you Tact-2.0 S ?

Yes
 No
 

Check this option if you have M/S 2150 connected to the main output.

Check this option if you have second M/S 2150 connected to the main output. This option is used in a biamplified system.

- If one or more M/S 2150 digital amplifiers are connected to your RCS 2.0S select “**Yes**”. You will now need to select the options that match your RCS 2.0S connections to your M/S 2150 amplifier(s). If you have more than one digital amplifier you will need to select more than one option.

Before proceeding to the next step you have to make sure that unique device addresses are assigned to Tact-2.0 S and each Tact digital amplifiers.

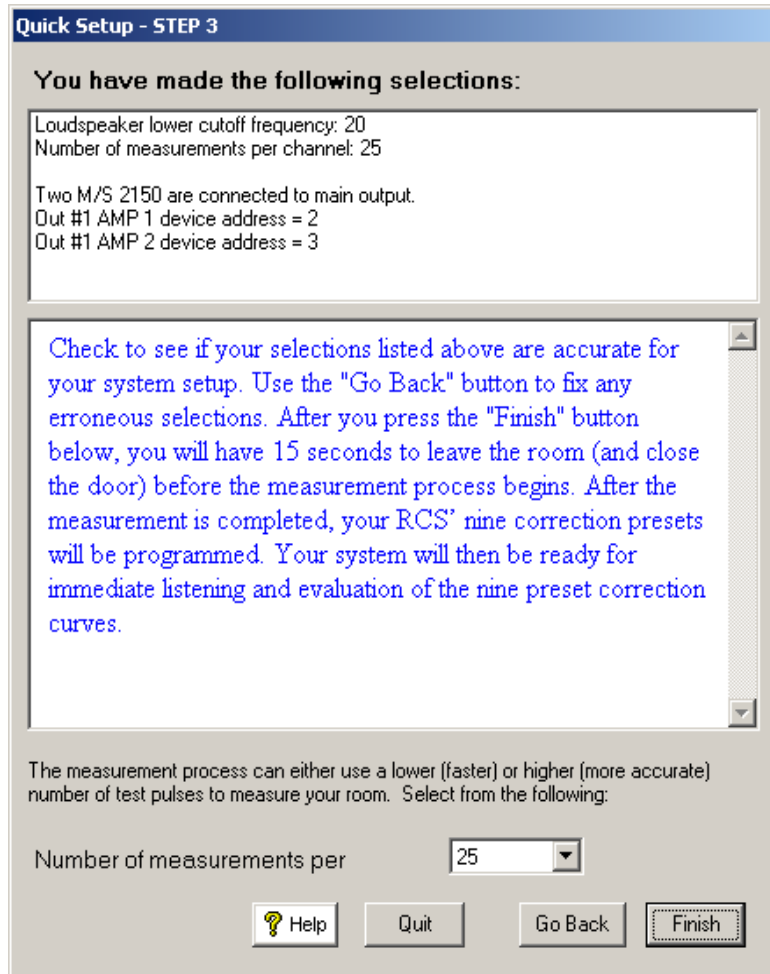
Amp panel

	Component	Address
Digital Out #1 Amp 1	Tact-2150	2
Digital Out #1 Amp 2	Tact-2150	3

- Next you will have to enter the unique address number that is assigned to each amplifier in the “**Amp panel**” section. The address entered for each amplifier should match the address assigned in the “ADDR” menu of each amplifier. We suggest address 2 for the first amplifier and 3 for the second if connected. To enter an address select the address window that you want to change with your left mouse button and enter the address number that you have set for your amplifier.

STEP III

Verify that the selections you made are correct and start the Quick Setup automation.



- If the settings listed are not correct select the **“Back”** button to go back and make the appropriate changes and return to the finish screen when you are ready to start the Quick Setup.

- If the settings listed are correct select the **“Finish”** button. This will start the Quick Setup measurement and programing automation. When the automated process is completed the **“Quick Setup Completed”** message will be displayed. You can now close the RCS 2.0S software and audition your nine correction presets.



NOTE: The Quick Setup will give you a 15 second delay before the Quick Setup automation starts. This gives you time to leave the listening area before the measurement process begins.