

TacT

AUDIO

Installation of TacT RCS 2.0 version 1.3 software

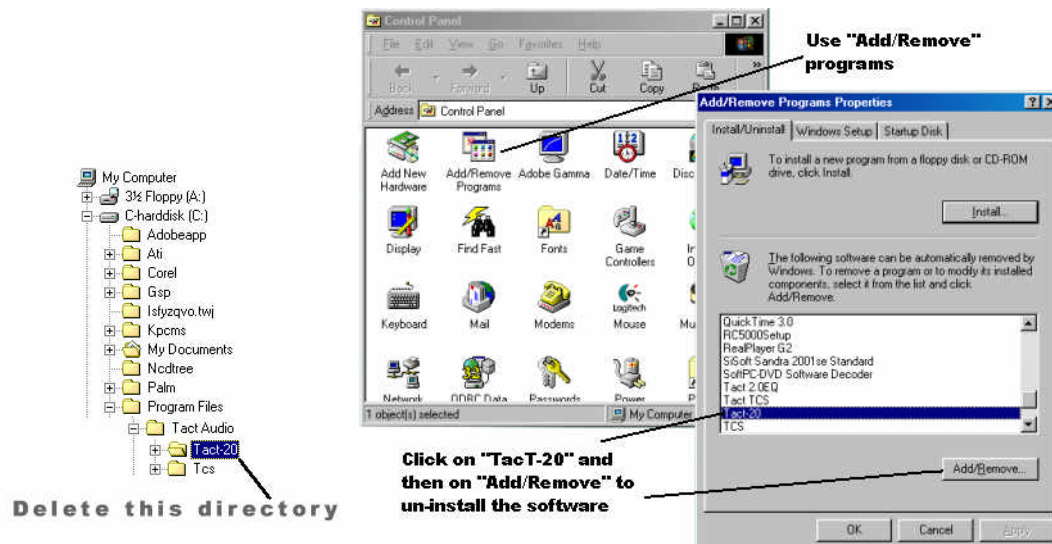
Important notice:

If the RCS 2.0 was previously programmed with software version 1.2, you should only complete step 1. (This update will allow you to use the TacT-20 software with WIN2000 & NT)

If the RCS 2.0 was programmed with version 1.0 or 1.1 you should complete both step 1 and 2. (See page 3 for new features in the software)

Step 1:

- Connect the RS232 communication cable between the computer and RCS 2.0 and turn power ON.
- Remove the old software installation by 1) deleting the “TacT-20” folder in the “TacT Audio” directory *or* 2) by using the Windows un-install utility “Add/Remove Programs” under Windows “Control Panel”.



- Insert the software disc, select your CD-Rom drive from windows desktop “My Computer” and double-click on “Install-Tact-20 v1.3”. (If downloaded from web-page, locate the file and double-click on the “Install-Tact20 v1.3” icon) Follow the on-screen instructions. *DO NOT CHANGE ANY OF THE DIRECTORIES WHEN PROMPTED.
- Click “Finish” to complete and exit the installation

Step 2:

- Launch the RCS 2.0 PC software

Loading of new software to 2.0:

1. Put 2.0 in standby, and switch it OFF from the rear-panel main-switch.
2. Hold down the Analog and Digital input selectors while turning the unit ON from the rear-panel. The display will indicate: PROGRAMMING MODE.
3. From the RCS-2.0 software main screen, select “Add-inns”, select "Standard" and press "Program". The software will ask you to confirm the programming sequence. When programming is completed, TacT RCS 2.0 will return to normal display-mode.
4. Exit programming screen.
5. Select “PR” from the RCS-2.0 software main-screen – this will open a new window. Click on “Clear” and press “S” while holding down the “Control” key. This will open up two boxes. Check the “System” box and leave the “Parametric EQ” Box un-checked.
6. Press “Program” and confirm by pressing “Yes”. Close the “PR” window when finished.

The RCS 2.0 is now programmed.

After this the unit will have the new software which include the following changes:

1. 6 dB additional digital gain. Please note that this will give full volume on a fully modulated CD when the main volume display indicates 93.9. So use the additional gain only for CDs that are recorded at a low level, or to enhance a low level passage on a CD. In connection with the M1 the level should normally be set at 93.9. (on the left of the display you will see the attenuation which will be 0.0 dB at 93.9 on the main volume display.)
2. In the menu system there will be an "OUT" sub menu. In this you can select if 2.0 should play Stereo, Mono, Left channel signal on both channels or Right channel signal on both channels. This will allow you to use 2 pcs of 2.0 in parallel for crossover applications etc.
3. One step further to the right of the OUT menu there is an analog menu. In this you can adjust the output level of the analog section by +- 6dB. Use the higher setting for low input sensitivity power amplifiers and the lower setting for high input sensitivity amplifiers. You will get the best overall signal to noise level if you adjust so that the 2.0 will just drive the amplifier into clipping at 93.9 on the main volume. So do not use more gain than necessary.
4. "Rem" menu is used for turning remote control on / off.
5. "ADDR" should be set to "001". This is the units device address and is used if multiple TacT products is controlled by same computer.

Import of measurements to target curve screen:

This feature allows you to compare directly between the measured response and the target response. To use this feature please follow these steps: From the correction screen select edit left. This will bring up the target curve screen. Go to "File" and select "Import Measurement M1", select a measurement from the Windows file system (The latest measurement will automatically be suggested). Pick the left channel measurement by double clicking on msr_l_11. Then pick the right channel by clicking on msr_r1. Now the left and right channels will be displayed together with the target curve. Align the levels of the measurement with the up-down arrows for M1 and M2.

This will allow you see exactly how much your target curve differs from your measured response. If – for instance – you do not want to change the overall tonal balancing of your speaker system at the higher frequencies then just plot the target curve according to the speakers natural response. Also you will be able to see directly how much correction will be applied at any frequency.

Less than full correction:

On the correction screen in the middle a new window displays: "Full". Click on the down arrow and you have 3 options: "Full", "Medium" and "Low". This option will allow you to select less accurate correction. This can be desirable for instance if the speaker system has limited dynamic range or for very low playback levels. (when you use the system for background playback at very low levels then the fully corrected sound can appear too tight and controlled)

The default setting is "Full" – this obviously will give you the complete correction of the frequency inaccuracies. The level of correction must be selected before correction is calculated. If you want to change one memory position from full correction to medium or low correction, then just select the desired option and push the "GO" button on the lower half of the screen. Then the system will re-calculate using the existing measurement and the selected target curve.