

Update the M/S2150 Firmware

Your M/S2150 has been pre-programmed with the latest firmware when shipped from our factory and does not need to be updated with the program CD that came with your unit. TacT Audio may occasionally release updated versions of the M/S2150 software that will be available on our website "www.tactaudio.com". This new software may contain updates or enhancements for your M/S2150. When instructed by a technician or messaged from our website please follow the instruction below to update your M/S2150 firmware.

Step I: Removing your old M/S2150 Software



Uninstall the current version of the M/S2150 software on your computer.

- 1 - Turn on your computer.
- 2 - Open the Windows control panel and select the "Add/Remove Programs" option.
- 3 - Highlight the "Tact-2150" option and click on "Change/Remove".
- 4 - Select "Yes" and the old Tact M/S2150 software will be removed.

NOTE:Your files stored under unique names will NOT be removed.

Step II: Install your new M/S2150 Software

You now need to install the new TacT M/S2150 software on your computer.

- Double-click on the "Tact 2150 vx.x.exe" file that you have downloaded or is found on the root of your CD and follow the installation instructions.

Step III: Reprogramming the M/S2150 Firmware



Program the new firmware for the M/S2150.

- 1 - Connect the PC to the M/S2150 using the RS232 cable.

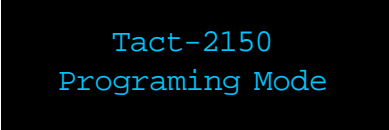
CAUTION: There should only be one M/S2150 connected to the RS232 cable during system reprogramming. Please disconnect any other M/S2150 units that may be daisy chained to the M/S2150 that is being programmed.

- 2 - Start the M/S2150 software on your computer

- 3 - Use the "Com" option in the Tact M/S2150 software to make sure that the M/S2150 and your computer are communicating.

- 4 - Turn the M/S2150 **OFF** from the front panel power switch.

5 - Press and hold the “**DIGITAL**” and “**ANALOG**” buttons on the front panel of the M/S2150 simultaneously while you turn the unit back ON from the front-panel power switch. Hold the buttons until the display shows the “**PROGRAMMING MODE**” screen.

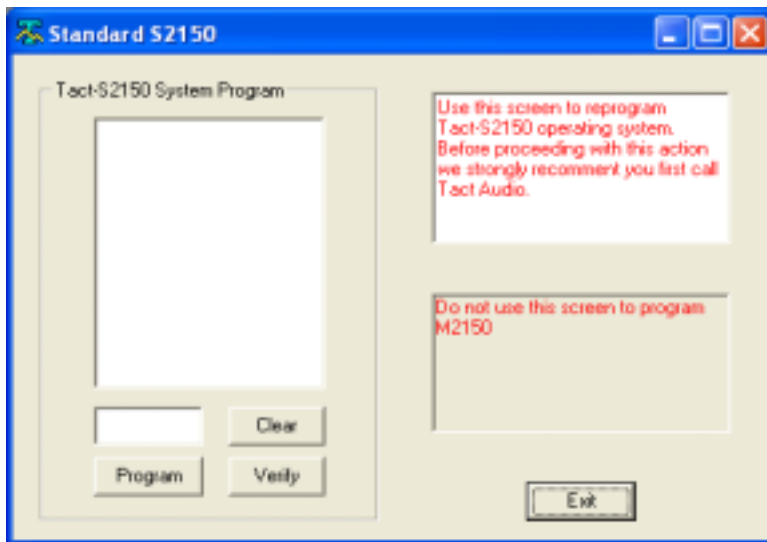


Tact-2150
Programing Mode

6 - From the TacT M/S2150 software main screen, click on “**Add-Ins**”. From the drop down menu select “**Standard M2150**” if you have an M2150 or select “**Standard S2150**” if you have an S2150. **If you have the required license file for the SP version of the 2150 software do not use the above selections and please see below for more information.**

SP - Software: If you have the required SP license file for your amplifier please select either the “**Standard M2150 SP**” or “**Standard S2150 SP**” version that matches your amplifier. This version of the firmware is available only to customers that have the required license file.

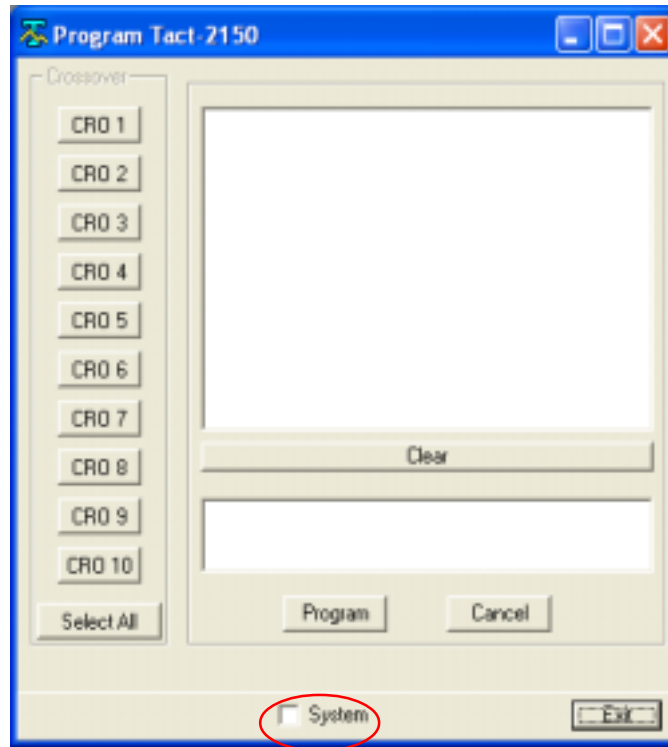
You should now see the Add-Ins window.



7 - Select the “**Program**” button and follow the prompts by answering all questions. You will need to be able to answer “**Yes**” to all questions to start the programming. The M/S2150 will turn OFF and then ON and return to normal operation mode.

**Step IV:
Reprogram the
M/S2150 System Files**

After updating the firmware the System Files will need to be reprogrammed.



1

1 - From the M/S2150 software main screen, click on the “PR” button. You should now see the programming window.

2 - Press and hold the “Control” key on your computer keyboard and then press the “S” key simultaneously. This should display the **System Option (1)** in the bottom center of the programming window.

3 - Left click your mouse in the square next to System to select it with a check mark.

4 - Press the “Program” button and follow the prompts by answering all questions. You will need to answer “Yes” to all questions to start the system file reprogramming. The Program window will display a “programming complete” message when the system is completed.

**M/S2150
update complete**

You have now completed updating your M/S2150 and it is ready for normal operation.